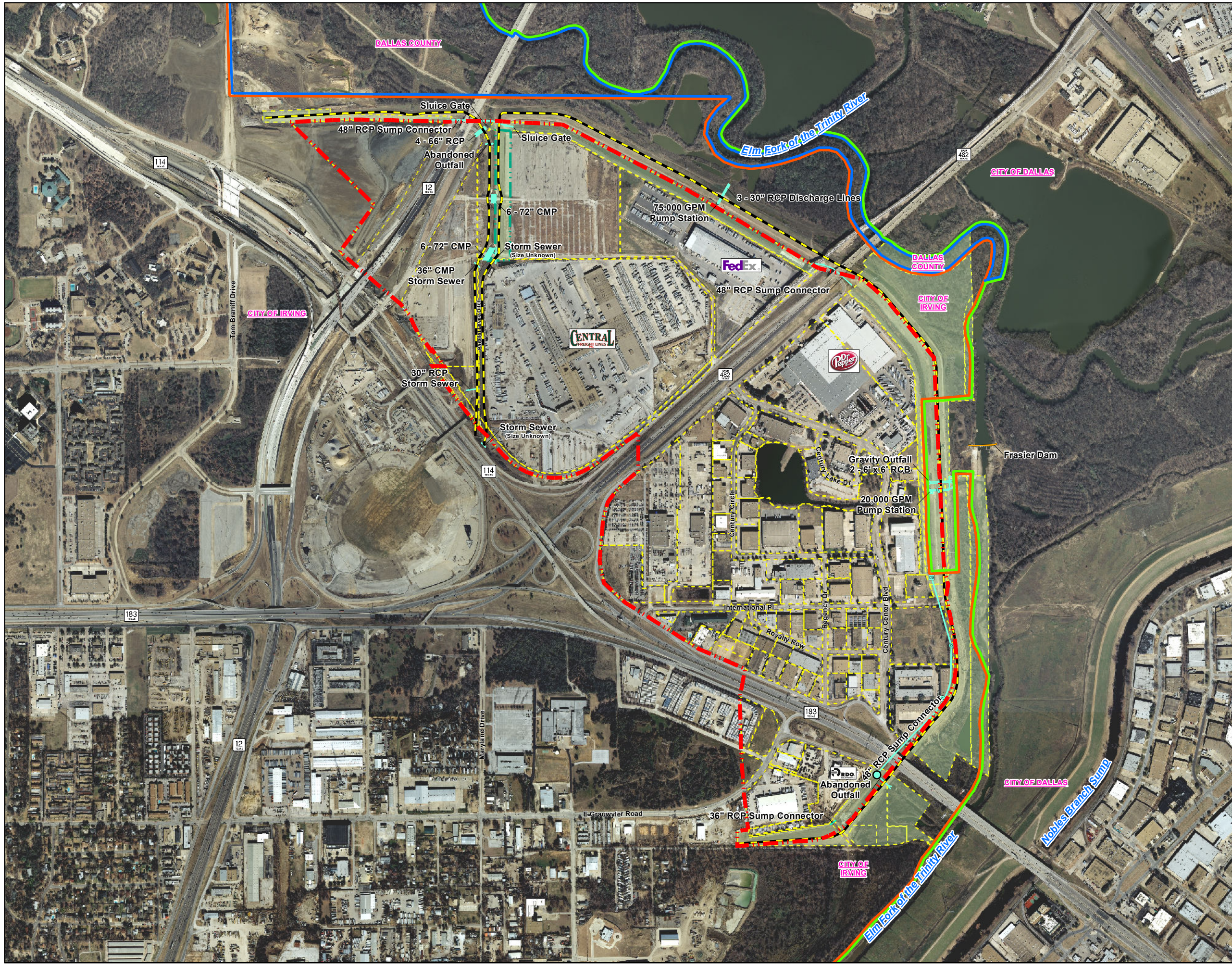


# Irving Flood Control District Section I



## KEY TO FEATURES

- Approximate District Boundary
- Levee Centerline
- IFCD Owned Property
- Area owned by IFCD-1, but not reflected in DCAD Parcel data
- Dallas County Appraisal District Parcels Updated January, 2013

## Stormwater Features

- Catchbasin
- Shut Off Valve
- Manhole
- Valve
- Caps and Cleanouts
- Stormwater Lines

## Political Areas

- City of Dallas
- City of Irving
- Dallas County Unincorporated Areas

Digital orthoimagery created by North Central Texas Council of Governments (NCTCOG). Imagery collected in January and February 2011 with a resolution of 0.5 feet.

Datum: North American Datum 1983  
Projection: Stateplane, North Central Texas, FIPS 4202

